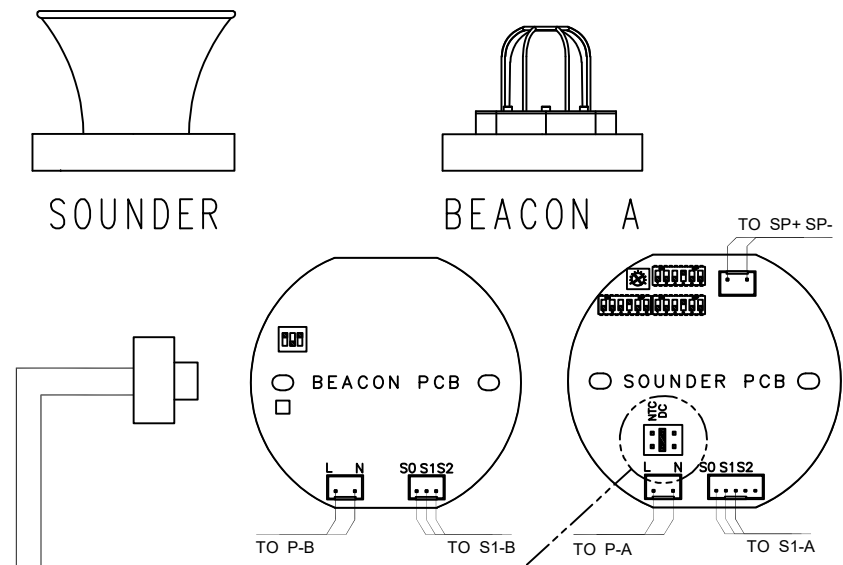


AC BUILDS



DC BUILDS

WIRING AND FUNCTION

FOR DC POWER SUPPLY:
"L" EQUAL "B+", "N" EQUAL "0"

APPLY POWER SUPPLY:
AC 100-230V OR DC 12V-48V TO "L"&"N"

CONNECT L-A TO START SOUNDER

CONNECT L-B TO START BEACON

IF YOU NEED TO ADD A RESISTANCE. PLEASE CONNECT THE RESISTANCE BETWEEN "L" & "N"

TO ADJUST THE SOUNDER TONE, PLEASE REFER TO THE INSTRUCTIONS IN THE PRODUCT TECHNICAL MANUAL

TO ADJUST THE BEACON FLASHING FREQUENCY, PLEASE REFER TO THE INSTRUCTIONS IN THE PRODUCT TECHNICAL MANUAL.

DO NOT SUPPLY AC OR DC POWER TO S0 /S1/S2

Cable Selection

Please select suitable size cable according to the distance between control room and the terminals and the quantity of equipments used.

Normal size for AC power supply cable L & N is 1.5mm² . Normal size for DC power supply cable L & N 2.5 mm² .

Please select the quantity of control cables according to the actual requirement. Normal size for control cable is 1mm² .



DRAWN: KH	FINISH: AS PARTS	MATERIAL: AS PARTS
DATE: 08/01/2024	TITLE: EX-TECH WIRING DIAGRAM	
CHECKED: SB	SB125 SB150	
DATE: 08/01/2024	STANDARD WIRING NO RESISTOR(S) NO DIODE(S)	

NO PART OF THIS DRAWING MAY BE REPRODUCED WITHOUT THE WRITTEN PERMISSION OF THE COMPANY

SCALE: A3	DWG No.	3
NTS	2081/A3	